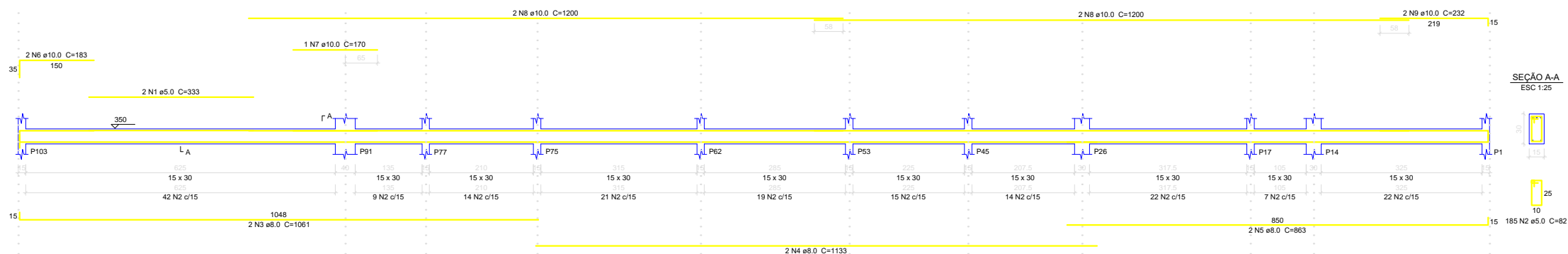
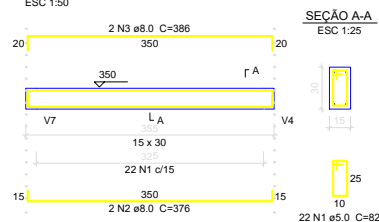


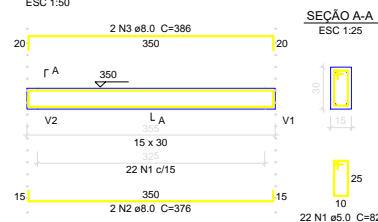
V20
ESC 1:50



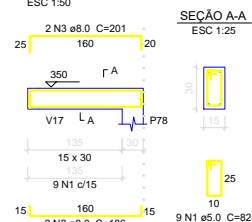
V21
ESC 1:50



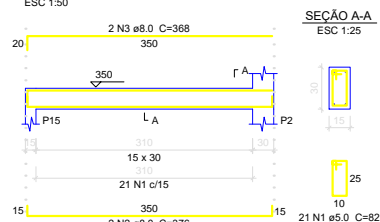
V22
ESC 1:50



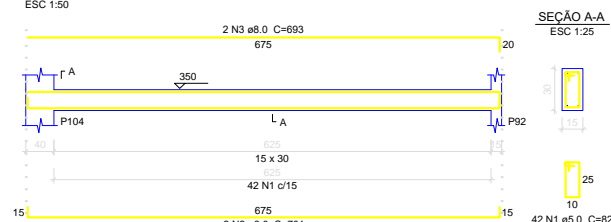
V23
ESC 1:50



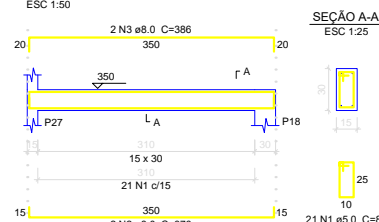
V24
ESC 1:50



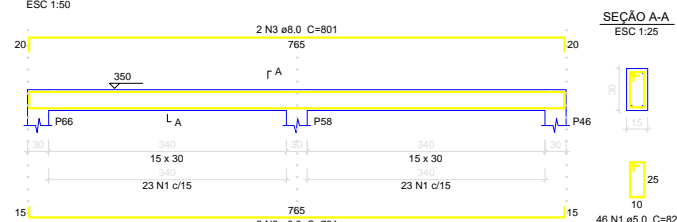
V25
ESC 1:50



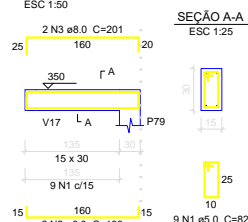
V26
ESC 1:50



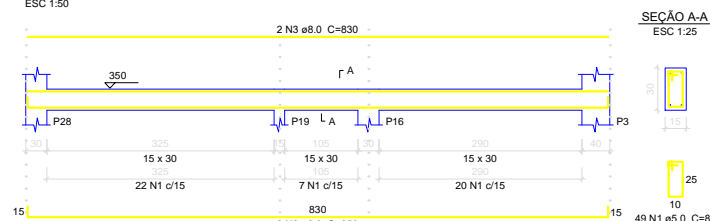
V27
ESC 1:50



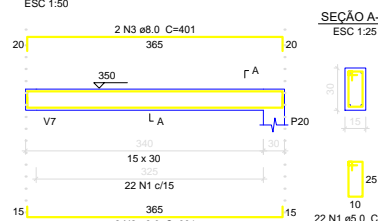
V28
ESC 1:50



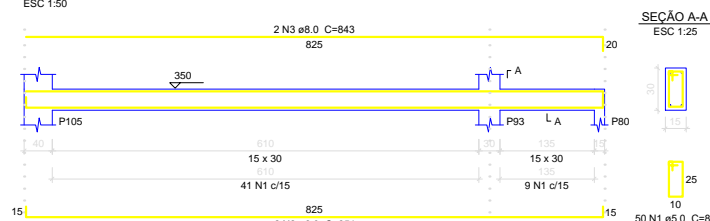
V29
ESC 1:50



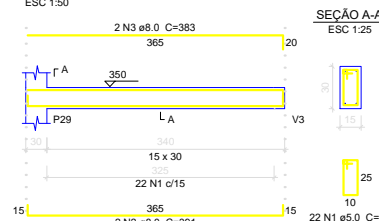
V30
ESC 1:50



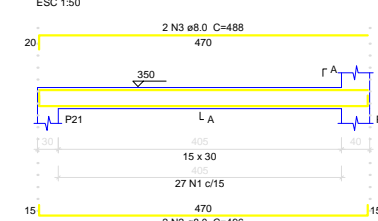
V31
ESC 1:50



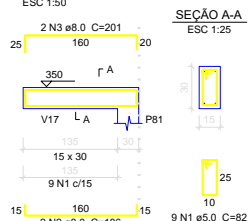
V32
ESC 1:50



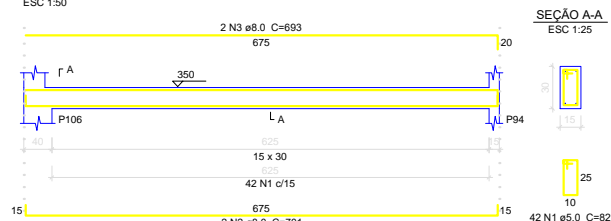
V33
ESC 1:50



V34
ESC 1:50



V35
ESC 1:50



Relação do aço

ELEMENTO	AÇO	N	DIAM	Q	UNIT (cm)	C.TOTAL (cm)
V20	CA60	1	5.0	2	333	666
	CA60	2	5.0	185	82	15170
	CA50	3	8.0	2	1061	2122
	CA50	4	8.0	2	1133	2266
	CA50	5	8.0	2	863	1726
	CA50	6	10.0	2	183	366
	CA50	7	10.0	1	170	170
	CA50	8	10.0	4	1200	4800
	CA50	9	10.0	2	232	464
V21	CA60	1	5.0	22	82	1804
	CA50	2	8.0	2	376	752
	CA50	3	8.0	2	386	772
V22	CA60	1	5.0	22	82	1804
	CA50	2	8.0	2	376	752
	CA50	3	8.0	2	386	772
V23	CA60	1	5.0	9	82	738
	CA50	2	8.0	2	186	372
	CA50	3	8.0	2	201	402
V24	CA60	1	5.0	21	82	1722
	CA50	2	8.0	2	376	752
	CA50	3	8.0	2	368	736
V25	CA60	1	5.0	42	82	3444
	CA50	2	8.0	2	701	1402
	CA50	3	8.0	2	693	1386
V26	CA60	1	5.0	21	82	1722
	CA50	2	8.0	2	376	752
	CA50	3	8.0	2	386	772
V27	CA60	1	5.0	46	82	3772
	CA50	2	8.0	2	791	1582
	CA50	3	8.0	2	801	1602
V28	CA60	1	5.0	9	82	738
	CA50	2	8.0	2	186	372
	CA50	3	8.0	2	201	402
V29	CA60	1	5.0	49	82	4018
	CA50	2	8.0	2	856	1712
	CA50	3	8.0	2	830	1660
V30	CA60	1	5.0	22	82	1804
	CA50	2	8.0	2	391	782
	CA50	3	8.0	2	401	802
V31	CA60	1	5.0	50	82	4100
	CA50	2	8.0	2	851	1702
	CA50	3	8.0	2	843	1686
V32	CA60	1	5.0	22	82	1804
	CA50	2	8.0	2	391	782
	CA50	3	8.0	2	383	766
V33	CA60	1	5.0	27	82	2214
	CA50	2	8.0	2	496	992
	CA50	3	8.0	2	488	976
V34	CA60	1	5.0	9	82	738
	CA50	2	8.0	2	186	372
	CA50	3	8.0	2	201	402
V35	CA60	1	5.0	42	82	3444
	CA50	2	8.0	2	701	1402
	CA50	3	8.0	2	693	1386

Resumo do aço

AÇO	DIAM	C.TOTAL (m)	PESO (kg)
CA50	8.0	351.2	138.6
	10.0	58	35.8
CA60	5.0	497.1	76.6
PESO TOTAL			
CA50	174.3		
CA60	76.6		

Vol. de concreto total (C-25) = 4.45 m³
Área de forma total = 74.21 m²



PREFEITURA MUNICIPAL DE VÁRZEA GRANDE

Av. Castelo Branco, Espaço Municipal, 2500 - Centro Sul, Várzea Grande/MT
CEP 78125-700 - Fone/Fax: 65 3688 8000

PROJETO:

CRECHE DO IDOSO

LOCALIZAÇÃO:

Avenida Presidente Arthur Bernardes s/n
Bairro: Ipase - Várzea Grande - MT

ASSUNTO:

FUNDAÇÃO - DETALHES VIGAS

AUTORES DO PROJETO:

AUREO EMANOEL DA SILVA
CREA: MT042435

DATA:

11/12/2019

ESCALA:

1/250

FOLHA Nº

03/07